



India Meteorological Department
Earth System Science Organisation
(Ministry of Earth Sciences)

BULLETIN NO.: 41 (BAY OF BENGAL 01/2020)

TIME OF ISSUE: 0800 HOURS IST

DATED: 21.05.2020

FROM: INDIA METEOROLOGICAL DEPARTMENT (FAX NO. 24643965/24699216/24623220)

TO: CONTROL ROOM, NDM, MINISTRY OF HOME AFFAIRS (FAX.NO. 23093750)

CONTROL ROOM NDMA (FAX.NO. 26701729)

CABINET SECRETARIAT (FAX.NO.23012284, 23018638)

PS TO HON'BLE MINISTER FOR S & T AND EARTH SCIENCES (FAX NO.23316745)

SECRETARY, MOES, (FAX NO. 24629777)

H.Q. (INTEGRATED DEFENCE STAFF AND CDS) (FAX NO. 23005137/23005147)

DIRECTOR GENERAL, DOORDARSHAN (23385843)

DIRECTOR GENERAL, AIR (23421105, 23421219)

PIB MOES (FAX NO. 23389042)

UNI (FAX NO. 23355841)

D.G. NATIONAL DISASTER RESPONSE FORCE (NDRF) (FAX NO. 26105912, 2436 3260)

DIRECTOR, PUNCTUALITY, INDIAN RAILWAYS (FAX NO. 23388503)

CHIEF SECRETARY, WEST BENGAL (FAX NO. 033-22144328)

CHIEF SECRETARY, GOVT. OF ODISHA (FAX NO. 0674 -2536660)

CHIEF SECRETARY, GOVT. OF ASSAM (FAX NO. 0361-2237200)

CHIEF SECRETARY, GOVT. OF MEGHALAYA (FAX NO. 0364 - 2225978)

CHIEF SECRETARY, GOVT. OF SIKKIM (FAX NO. 03592 -204323)

Sub: Super Cyclonic Storm 'AMPHAN' (pronounced as UM-PUN) lay as a Cyclonic Storm over Bangladesh

The Super Cyclonic Storm 'AMPHAN' (pronounced as **UM-PUN**) moved north-northeastwards with a speed of 27 kmph during past 06 hours, further weakened into a **Cyclonic Storm** and lay centered at 0530 hrs IST of today, the 21st May 2020 over **Bangladesh** near Lat. 24.7°N and Long. 89.5°E about 270 km north-northeast of Kolkata, 150 km south of Dhubri and 110 km south-southeast of Rangpur (Bangladesh).

It is very likely to continue to move north-northeastwards and weaken further into a Deep Depression during next 03 hours and into a Depression during subsequent 06 hours.

Forecast track and intensity are given in the following table:

Date/Time(IST)	Position (Lat. °N/ long. °E)	Maximum sustained surface wind speed (Kmph)	Category of cyclonic disturbance
21.05.20/0530	24.7/89.5	60-70 gusting to 80	Cyclonic Storm
21.05.20/1130	26.2/90.7	30-40 gusting to 50	Depression

(1) Heavy rainfall Warning:

Assam & Meghalaya

Light to moderate rainfall at most places with heavy to very heavy falls at isolated places very likely over the western districts of Assam & Meghalaya on 21st May.

(2) Wind warning

West Bengal

- Squally wind, speed reaching 30 to 40 kmph gusting to 50 kmph very likely over Meghalaya & West Assam during next 12 hours.

Kindly visit www.rsmcnewdelhi.imd.gov.in and www.mausam.imd.gov.in for updates on the system.

Next Bulletin will be issued at 1130 hours IST of today, the 21st May, 2020.

(Sunitha Devi S)
Scientist-E, RSMC, New Delhi

Copy to: RMC Guwahati/ ACWC Kolkata

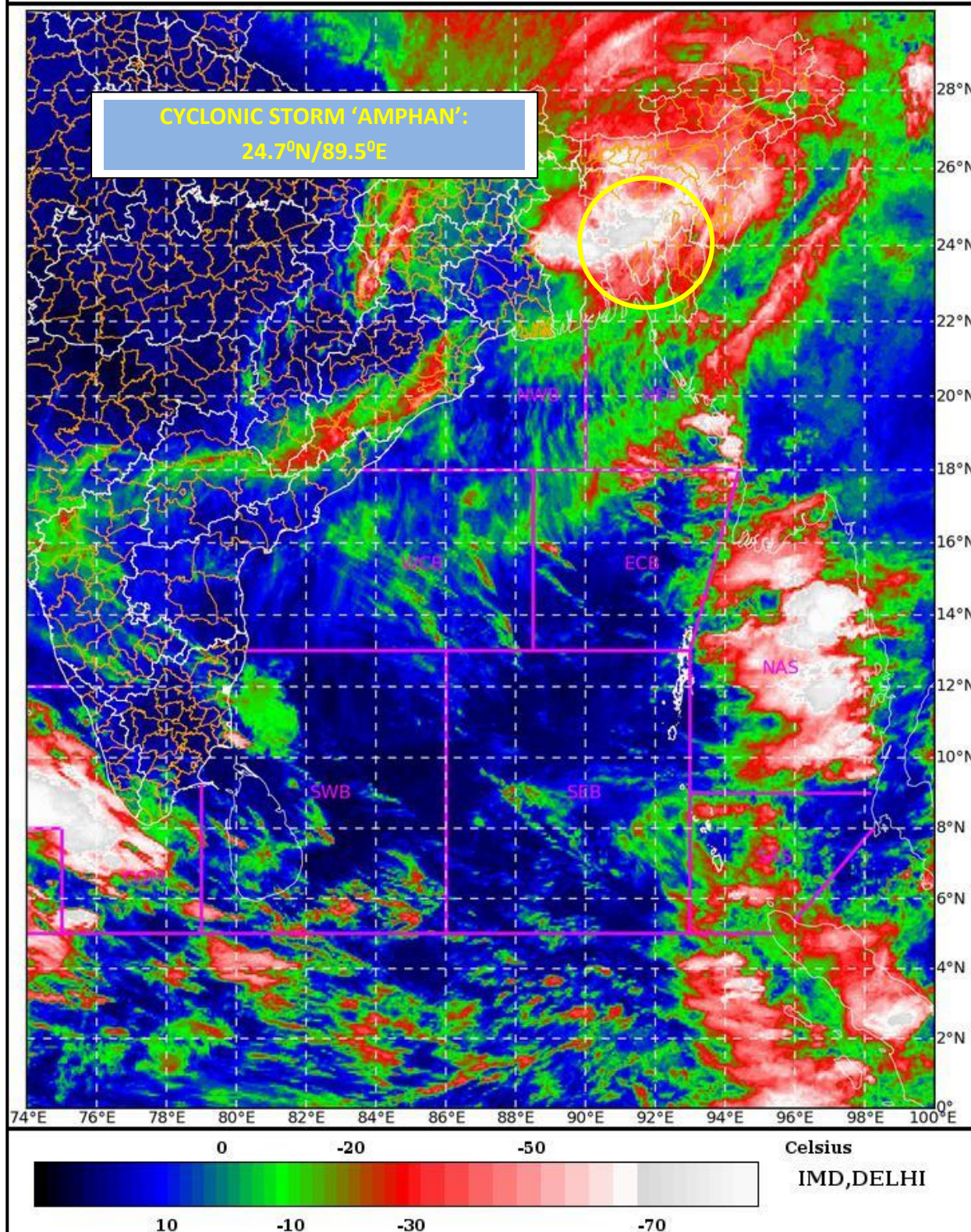
Spatial rainfall distribution: Isolated: <25%, A few: 26-50%, Many: 51-75%, Most: 76-100%
Rainfall amount (mm): Heavy rain: 64.5 – 115.5, Very heavy rain: 115.6 – 204.4, Extremely heavy rain: 204.5 or more.

SAT : INSAT-3D IMG 21-05-2020/(0030 to 0056) GMT

IMG_TIR1_TEMP 10.8 um 21-05-2020/(0600 to 0626) IST

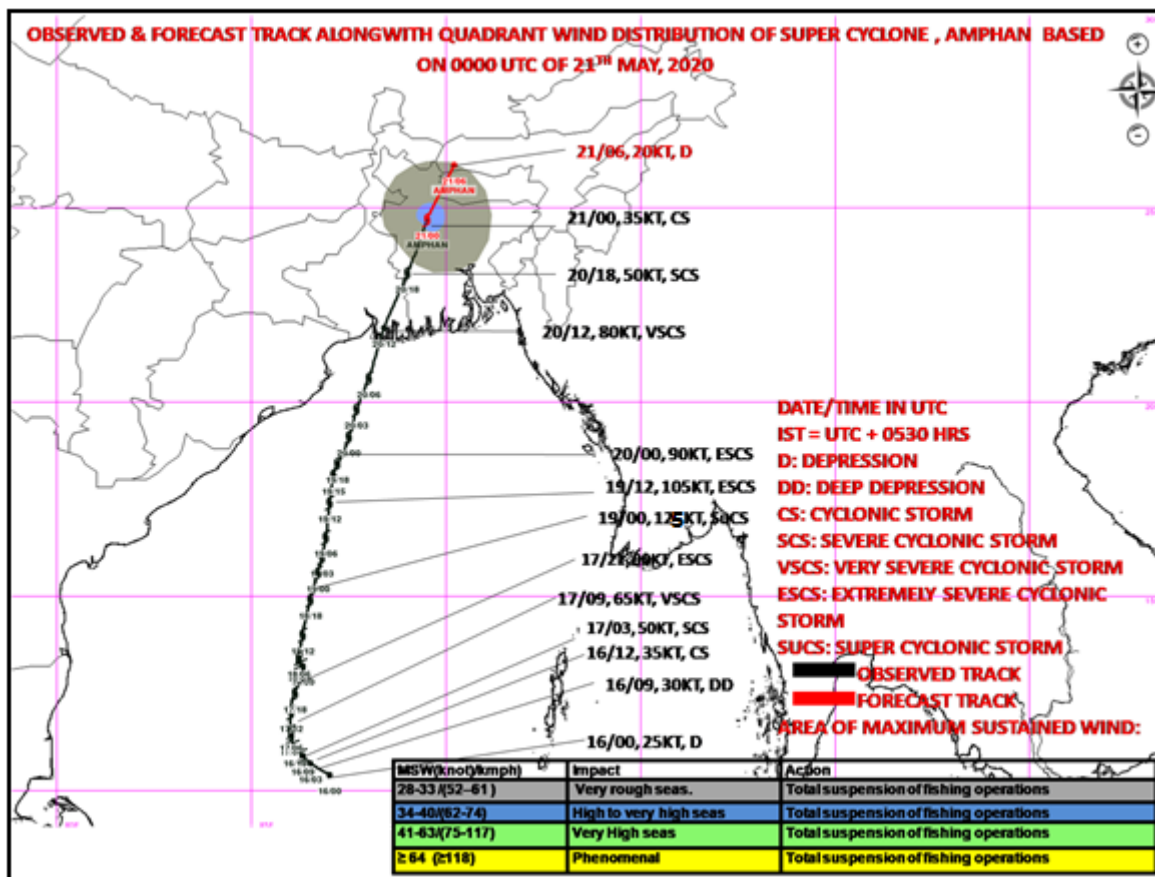
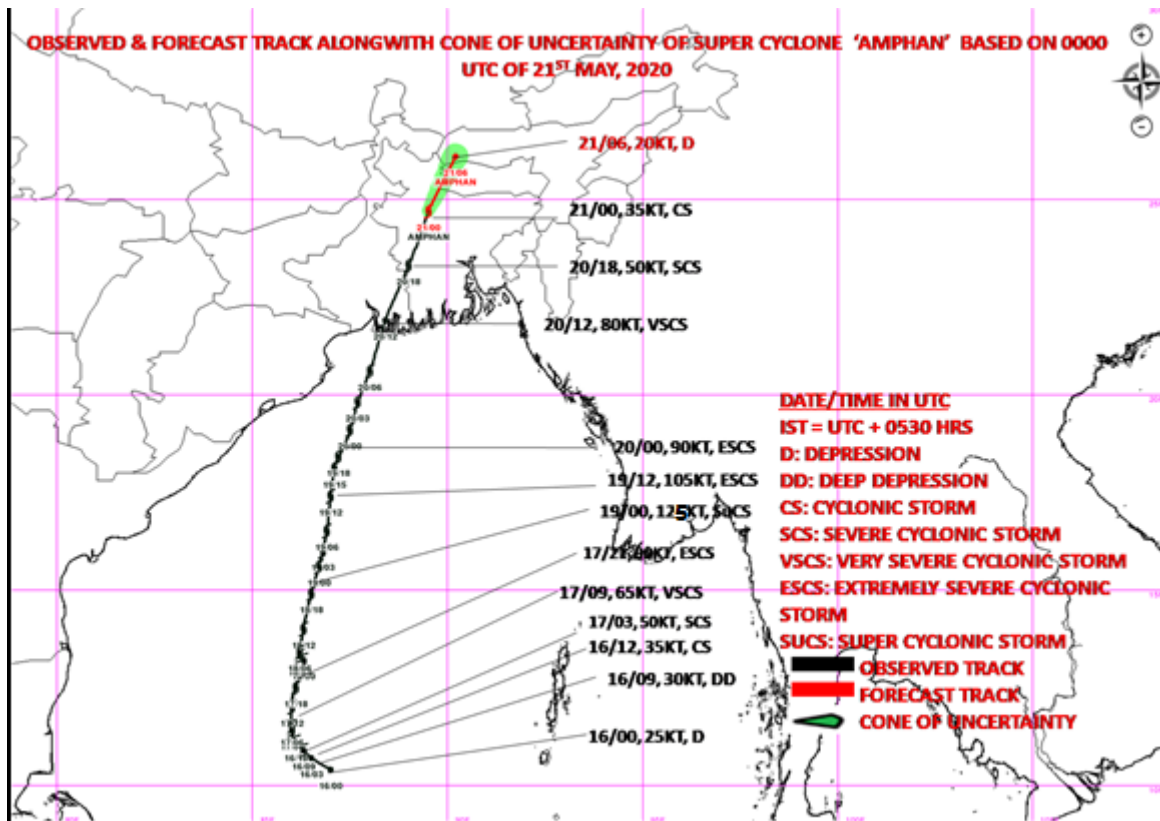


L1C Mercator



Legend: WCB – Westcentral Bay of Bengal
NWB – Northwest Bay of Bengal

Spatial rainfall distribution: Isolated: <25%, A few: 26-50%, Many: 51-75%, Most: 76-100%
Rainfall amount (mm): Heavy rain: 64.5 – 115.5, Very heavy rain: 115.6 – 204.4, Extremely heavy rain: 204.5 or more.



Spatial rainfall distribution: Isolated: <25%, A few: 26-50%, Many: 51-75%, Most: 76-100%
 Rainfall amount (mm): Heavy rain: 64.5 – 115.5, Very heavy rain: 115.6 – 204.4, Extremely heavy rain: 204.5 or more.